

MEDIN Open Meeting 2025

Unlocking the Oceans:
managing emerging and established marine data

Met Office, Exeter, 4th December 2025

**MDE Heritage Accelerator:
mobilising developer data to speed the delivery of clean
offshore technologies**

Dr. Antony Firth, MCI(A)
Head of Marine & Coastal Heritage
Historic England
antony.firth@historicengland.org.uk

Introduction



MDE Heritage Accelerator



‘... to **speed** the deployment of **offshore wind farms** to deliver **net zero commitments** by mobilising **heritage information** to enable **better and faster decision-making** by regulators, developers and their advisers ...’

14 MW direct drive wind turbine nacelles at offshore windfarm pre-assembly site, 18 Jun 2025, Siemens Gamesa Renewable Energy, Kingston upon Hull. Historic England Archive DP572281



Marine Delivery
Routemap

Marine Delivery Routemap

Towards a shared vision for
our seabed and coastline

September 2024



THE CROWN
ESTATE

<https://www.thecrownestate.co.uk/our-business/marine/Marine-Delivery-Routemap>

Marine

Offshore Wind Evidence and Change Programme

Overview

Future of offshore wind

Offshore Wind Leasing Round 4

Offshore Wind Leasing Round 5

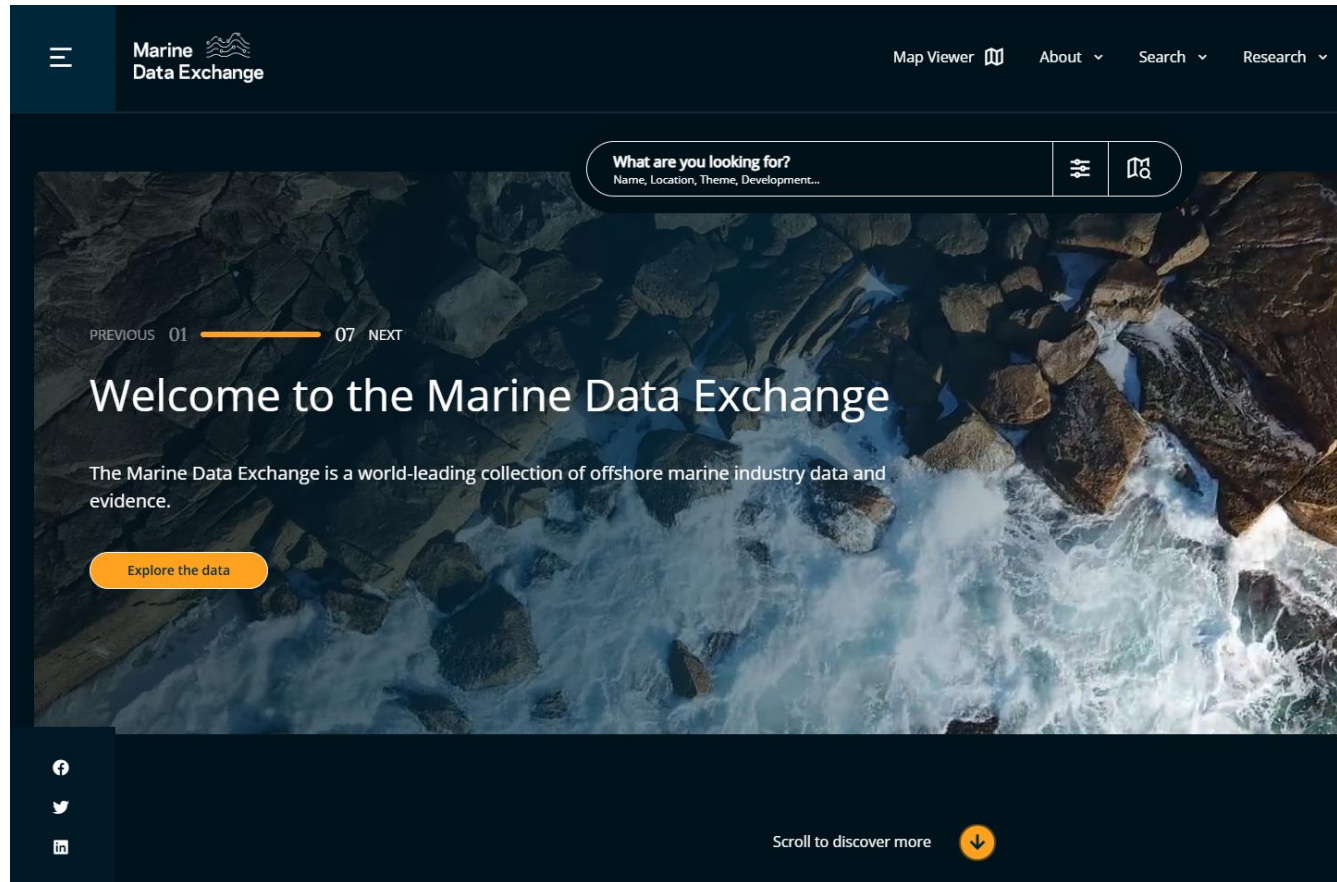
Marine Data Exchange

Offshore Wind Evidence and Change Programme

Our £50 million investment in the Offshore Wind Evidence and Change Programme funds a range of projects to de-risk and accelerate the delivery of clean offshore technologies and supports the UK's position as one of the most attractive places to invest in offshore renewables, whilst enabling our marine and coastal ecosystems to thrive.



Marine Data Exchange (MDE) and NMHR Refresh



Reimagining the National Marine Heritage Record for England

Public access to marine historic environment data.

Published 12 May 2023

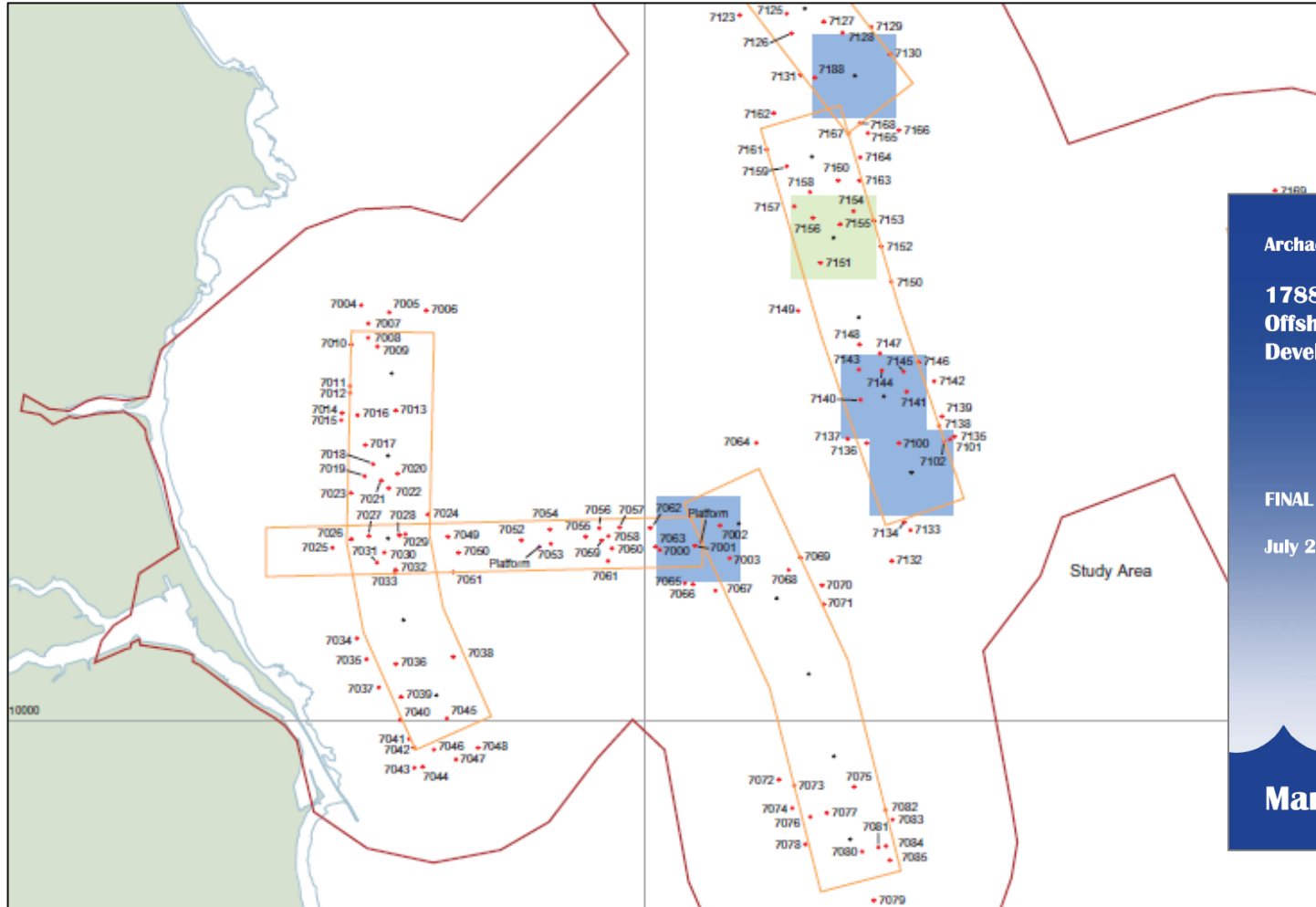
Updated 30 June 2025

As of September 2024, the Marine Historic Environment Record Service for England (MHERSE) is the principal point of contact for enquiries regarding access to, and interpretation of, the National Marine Heritage Record (NMHR). Please get in touch with the Service at:

Email: MHERSE@historicengland.org.uk

MHERSE has been established in conjunction with the development of a new database to accommodate and enhance the NMHR. When fully launched, currently estimated to take place in the second half of 2026, the new database system will also incorporate an online portal for searching and viewing NMHR data. As such, MHERSE, alongside this new system, will provide the key means through which the public, the academic community and commercial users will engage with Historic England's continually evolving marine historic environment knowledge base, the product of decades of expertise from across the organisation.

MDE Heritage Accelerator: outline




Archaeological Impact Assessment


1788: Westermost Rough Offshore Wind farm Development

FINAL REPORT

July 2009

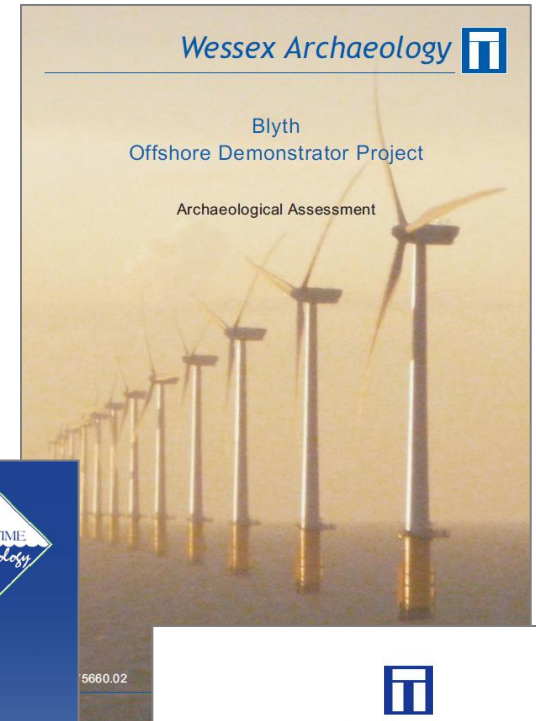
Maritime Archaeology Ltd.




Wessex Archaeology 

Blyth Offshore Demonstrator Project

Archaeological Assessment

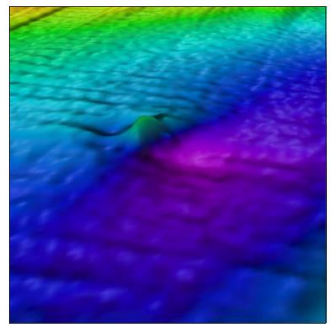





making sense of heritage

Dudgeon Offshore Wind Farm

Geophysical Assessment of 2013 Data



Ref: 69682.04
July 2014

 geoservices

Enhancing MDE and NMHR / Improving practices

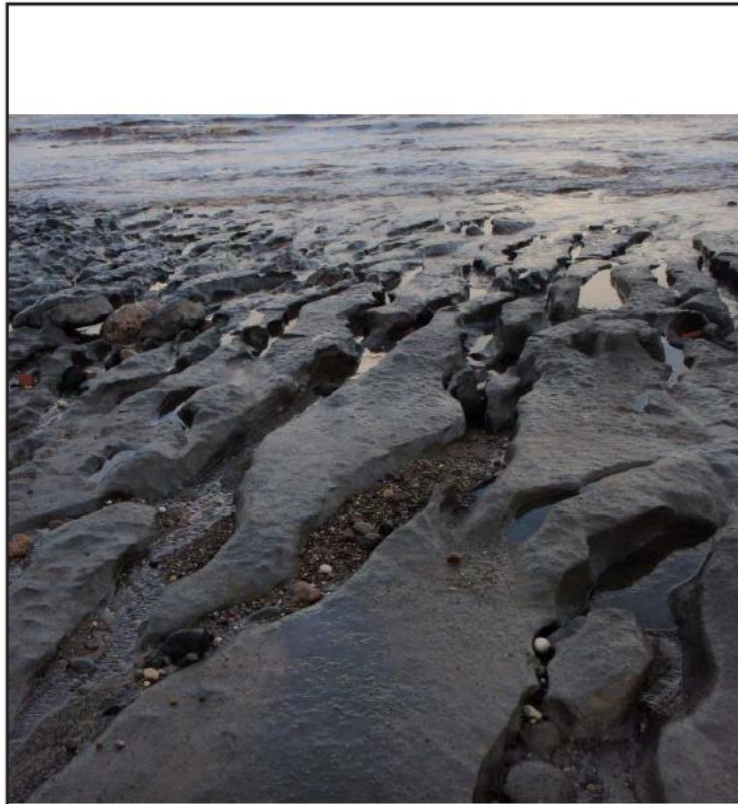
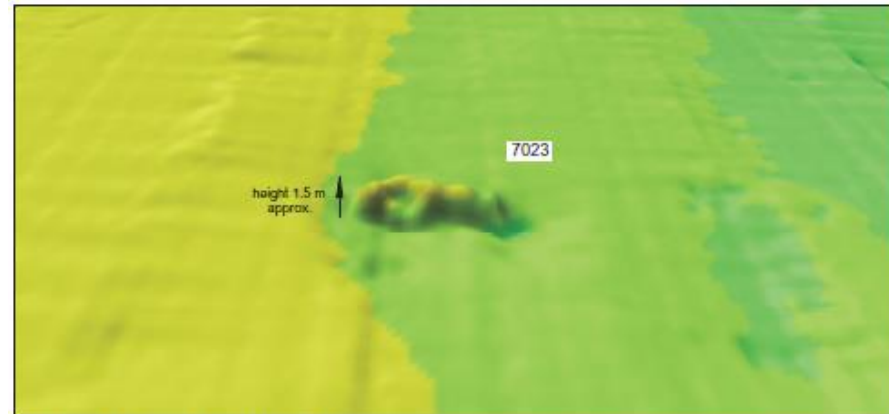
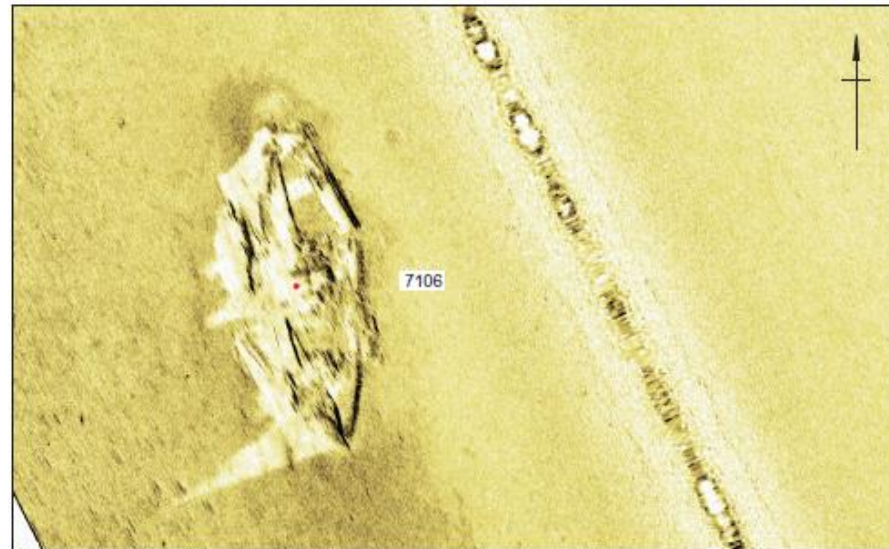


Figure 40. Exposed Peat beds on the foreshore at Sand-le-Mere (MAL-175), (MAL Walkover Survey 2008).



Multibeam bathymetry images of site 7023



Sidescan sonar images of wreck 7106

Images: Delivery partners via MDE

MDE Heritage Accelerator: Scope



Image: Antony Firth

MDE Heritage Accelerator: governance

Project Advisory Group

The Crown Estate

Defra/DESNZ

DCMS

Seabed User and Developer Group (SUDG)

OWIC Pathways to Growth (P2G)

MEDIN

Archaeology Data Service (ADS)

UK Consultative Group

Historic Environment Scotland

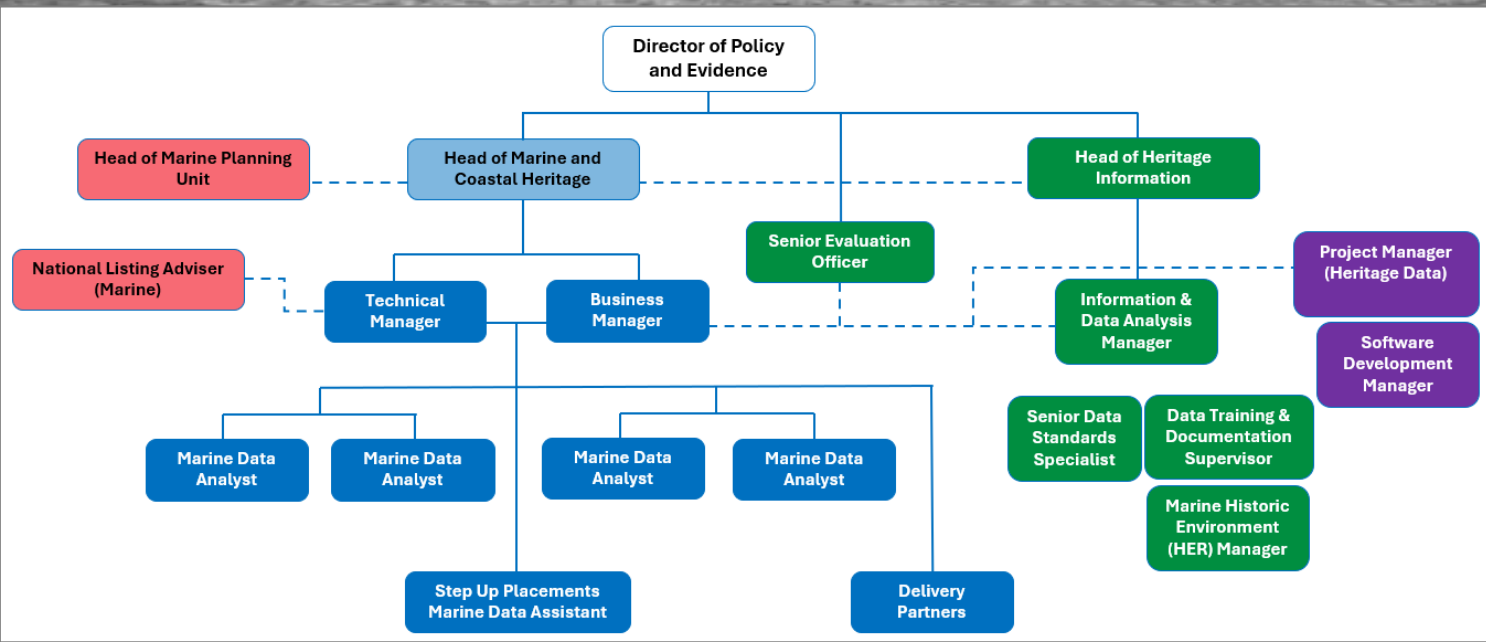
RCAHMW

DAERA

UK CSM

Stakeholder Group

Delivery Partners +



A wreck on the Goodwin Sands possibly the "Silvia Onorato", 1948 © Historic England. Aerofilms Collection EAW020496 flown 9 November 1948

Ocean Decade UK

2021 United Nations Decade of Ocean Science for Sustainable Development
2030



UK Centre for Seabed Mapping (UK CSM)

Coordinating the collection, management and access of seabed mapping data through collaboration.

Work Package 1: Enhancement

Activities directed to delivering comprehensive capture of heritage information within the MDE and the integration of that data with the NMHR.

Three sub-packages:

WP1.1 Audit and data / process modelling

WP1.2 Enriching MDE with intermediate data products and NMHR identifiers

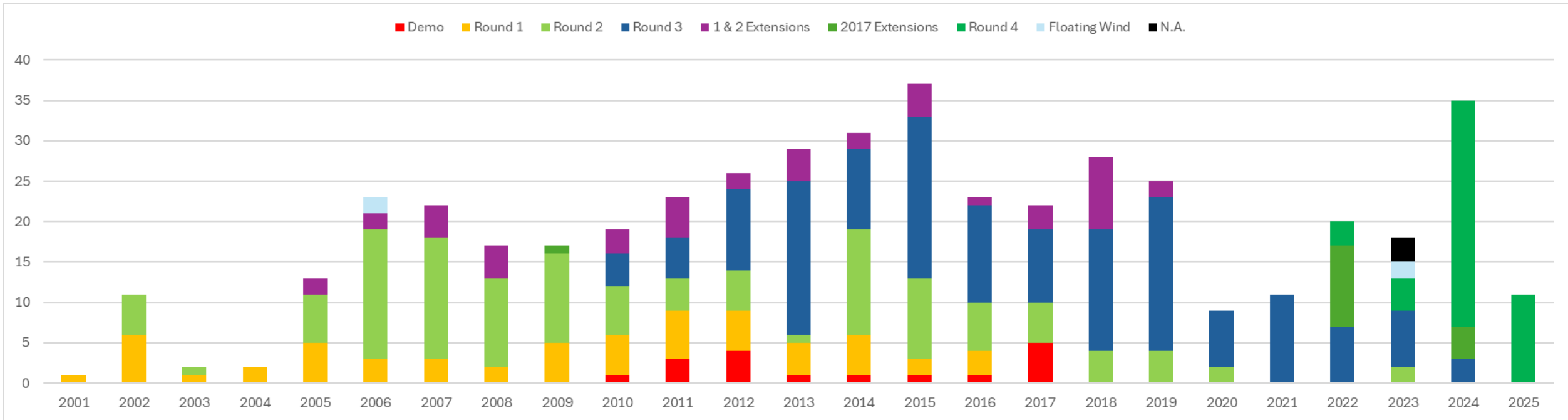
WP1.3 Enhancing NMHR from MDE

Principal outputs:

- Comprehensive heritage information uploaded to MDE and enriched with heritage identifiers;
- NMHR enhanced by MDE data;
- MDE/NMHR accessible and cross-searchable through HE Open Data Hub, Historic Environment DAC and MEDIN Portal.



Audit



MDE Audit: reports by year and OWF development round

Work Package 2: Sensitivity/Opportunity Mapping

Uses enhanced NMHR records from WP1.3 supported by original MDE data rendered accessible by WP1.2 to develop initial sensitivity/opportunity maps for the marine historic environment.

Three sub-packages:

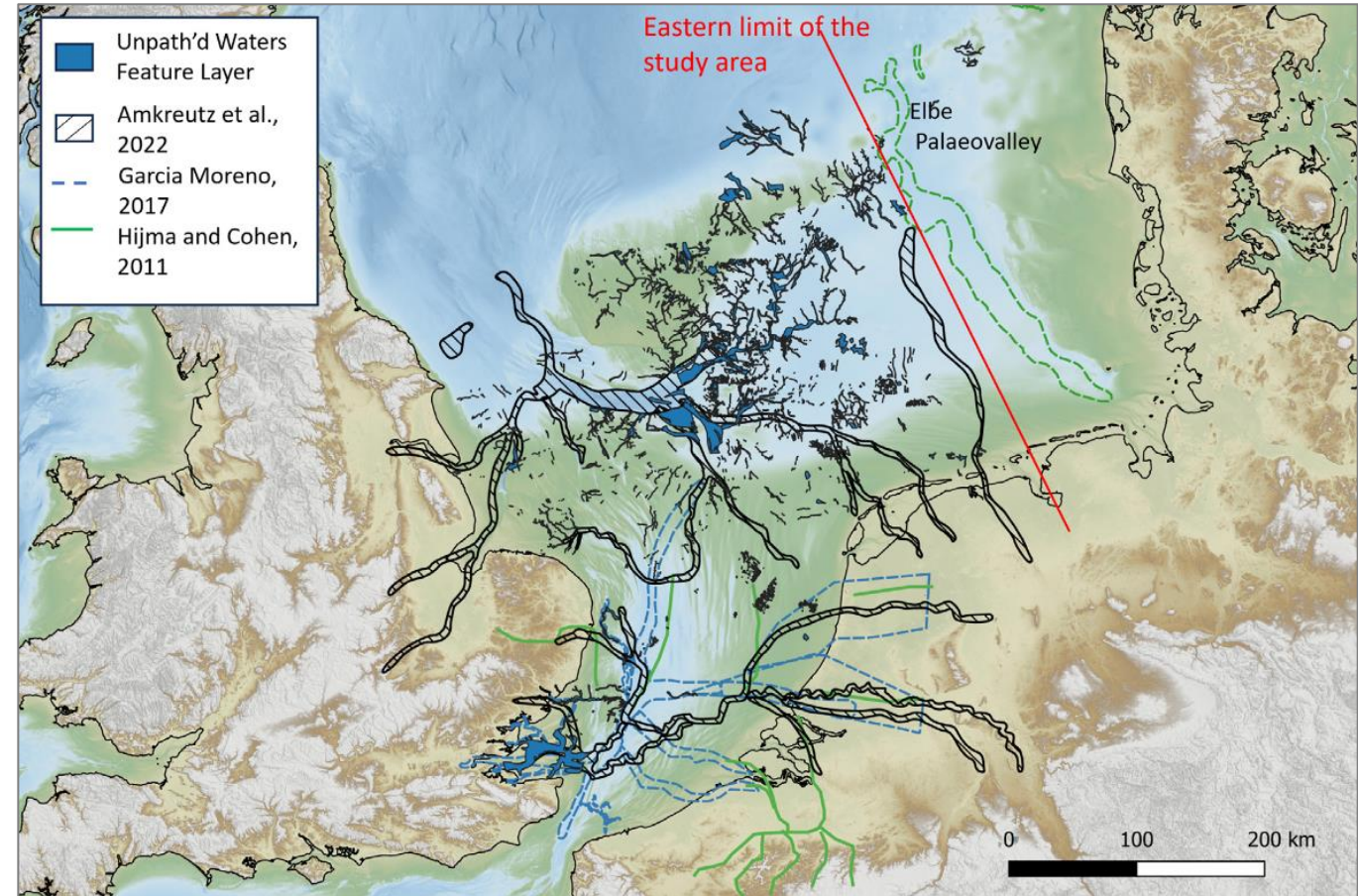
WP 2.1 Discrete Features

WP 2.2 Surfaces and Deposits

WP 2.3 Coastal

Principal outputs:

- Digital maps of sensitivities and opportunities presented by marine historic environment, capable of supporting strategic decision-making and prioritisation.



Unpath'd Waters, Sloane (ed.) 2025, Fig. 12: Comparison of academic sourced palaeogeographic reconstructions with the Unpath'd Waters feature layer. Background highlights areas which would have been land during the early Mesolithic about 10,000 years.

Work Package 3: Management, Engagement and Evaluation

Activities that run throughout the project to ensure its effective management, to deliver commitments on engagement, and to evaluate the project's success.

Four sub-packages:

WP 3.1 Oversight, Management, Monitoring and Reporting

WP 3.2 Dialogue on **Practice and Standards**

WP 3.3 **Public Engagement**

WP 3.4 Evaluation



Work Package 3: Management, Engagement and Evaluation

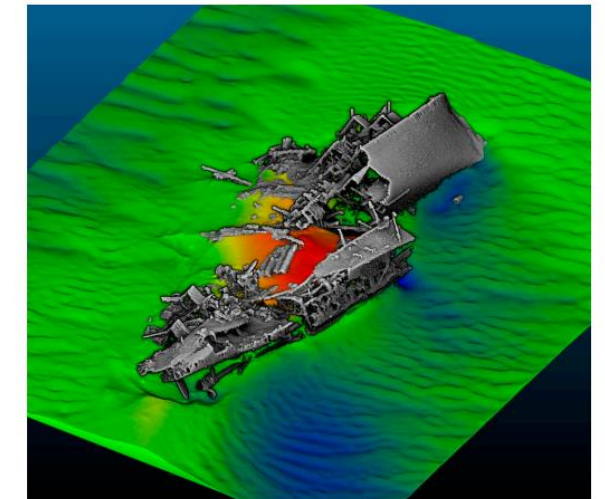
Principal outputs:

- **Guidance** to encourage future deposition in MDE and inform related recording practices in both MDE and NMHR.
- **Policy briefs** on relationship between heritage and offshore wind development etc.
- **Case studies, infographics and stories** to increase public engagement and benefit.
- **Publications** – peer-reviewed journal articles to serve as robust evidence on the heritage content of MDE and the role of heritage data in decision-making.



Marine Geophysics

Data Acquisition, Processing, and Interpretation
Guidance Notes (2nd Edition)



MDE Heritage Accelerator: Impact



Thank you!

Dr. Antony Firth, MCIfA
antony.firth@historicengland.org.uk

