

# An introduction to MEDIN – the hub for UK marine data

Dr Clare Postlethwaite  
cfpo@noc.ac.uk



# Content

---

- What is MEDIN?
- Some key resources
- Context for today's meeting

*“Unlocking the Oceans:  
managing emerging and established marine data”*

*Session 1: Marine data types without a MEDIN Data Archive Centre*

*Session 2: Solutions for data management challenges*

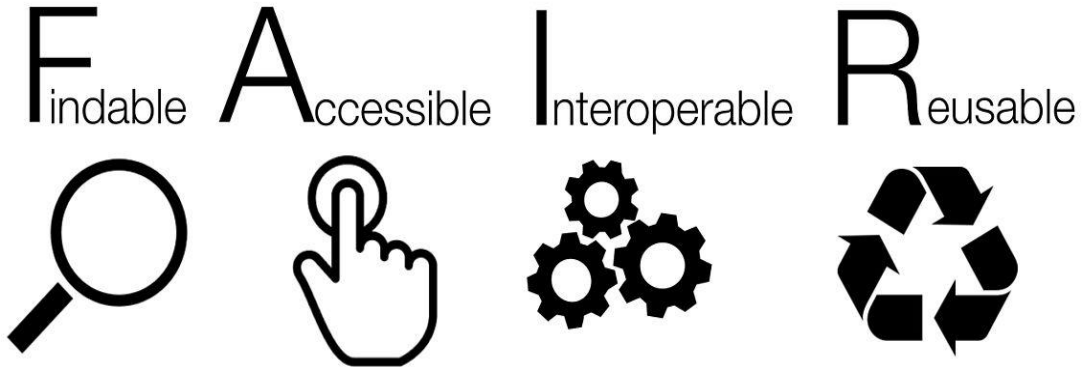


# What is MEDIN?

- National framework for managing UK marine data
- Long-term, open partnership, established 2008
- Funded by 16 sponsors
- Over 60 partners
- Hosted at the National Oceanography Centre
- ‘measure once, use many times’
- Group of organisations, tools and resources that make it easier to share UK marine data



# Vision and strategic goals



We deliver our vision for all of the UK marine community



We deliver the technical infrastructure to ensure UK's marine data are FAIR



We foster an open and constructive data management culture

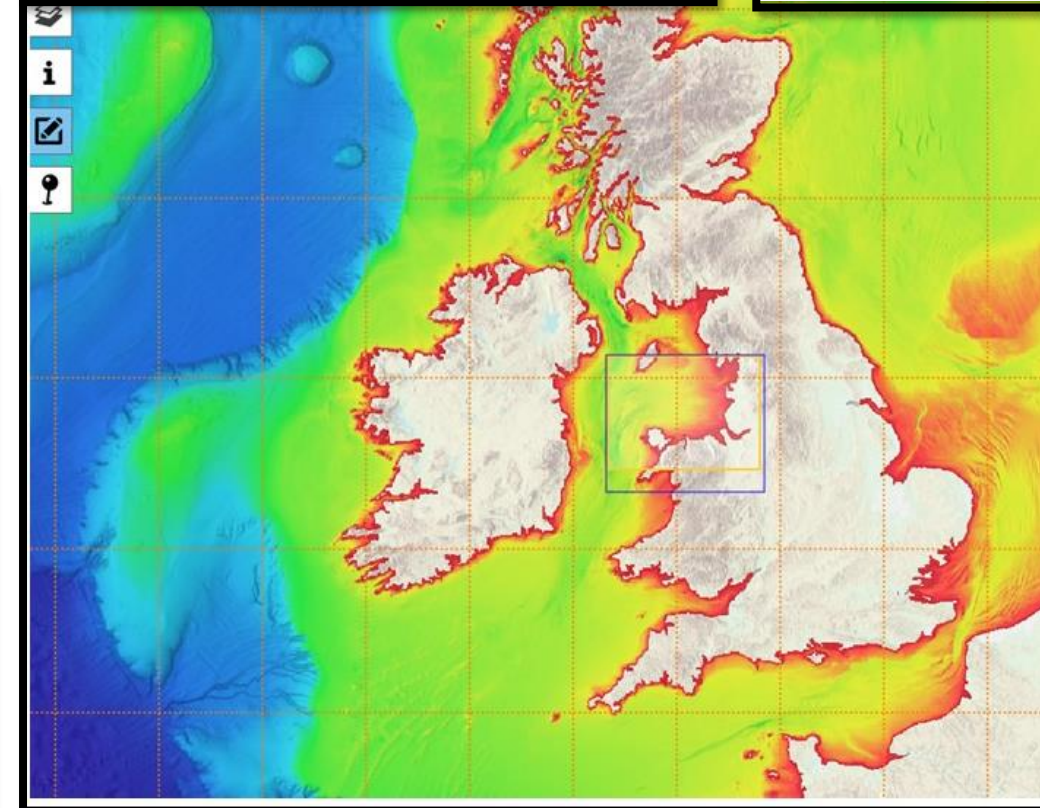


# A single place to “Find” UK marine data

- MEDIN discovery metadata portal
- The hub for UK marine data
- Over 19,000 datasets from 600+ organisations
- Mainly open data

Cryosphere  
Biodiversity  
Administration  
Archaeology Chemistry  
**Marine Geology**  
Fisheries Socio-economic  
Meteorology  
**Bathymetry**  
Physical Oceanography  
Anthropogenic

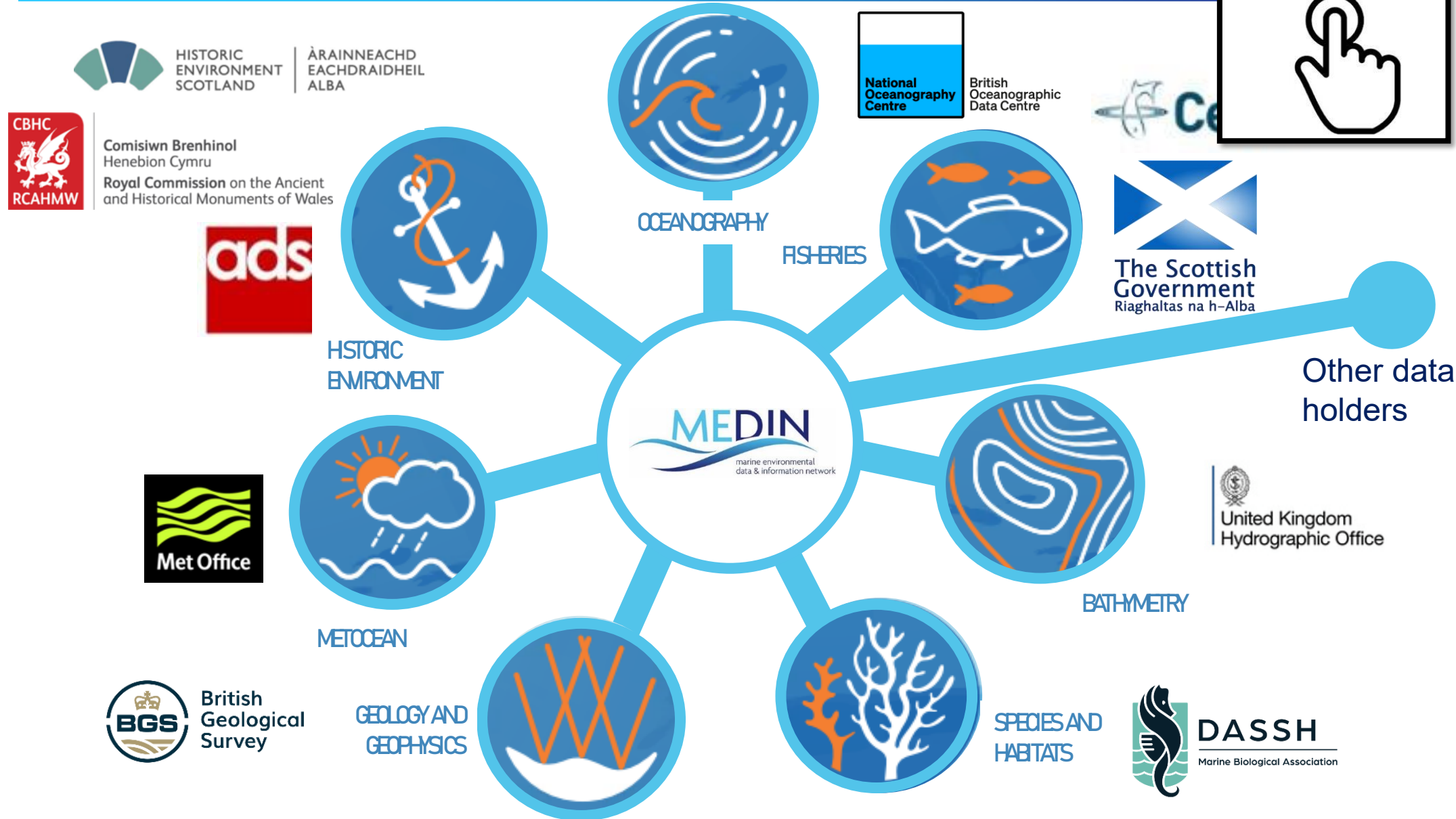
SEARCH ?  
Free search ?



F  
indable



# A network of accredited Data Archive Centres (DACs)



# Internationally interoperable tools/data flows

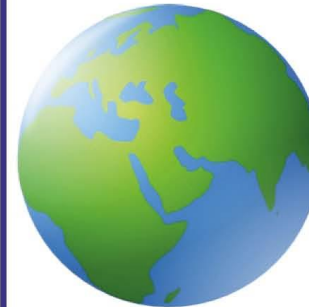
UK Marine Standard:



UK Standard:  
GEMINI2

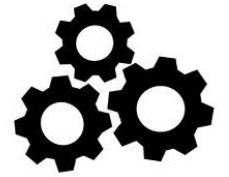


European Standard:  
INSPIRE Directive



International Standard:  
ISO19115

Interoperable



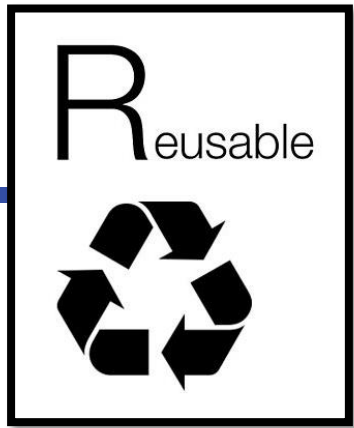
Standard



Controlled  
vocabularies



# Tools to ensure data are reusable



## Data Guidelines

list of information that should be collected with your data to ensure they can be re-used in the future.

Tailored to >25 different methods/data types



Guidelines

Community derived  
and supported



# Context for today's meeting: How the DAC network evolved

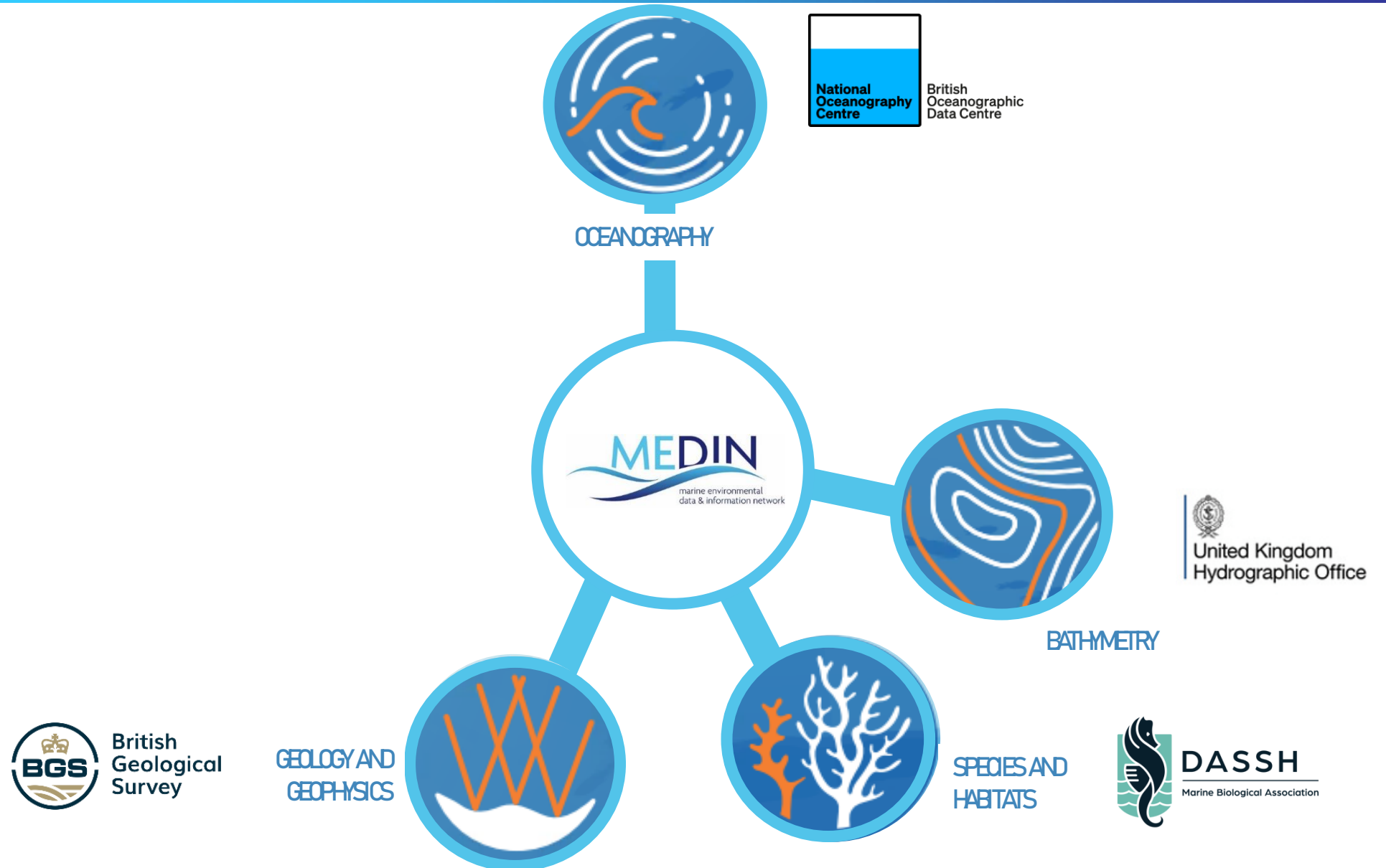
---

2008



# How the DAC network evolved

2009



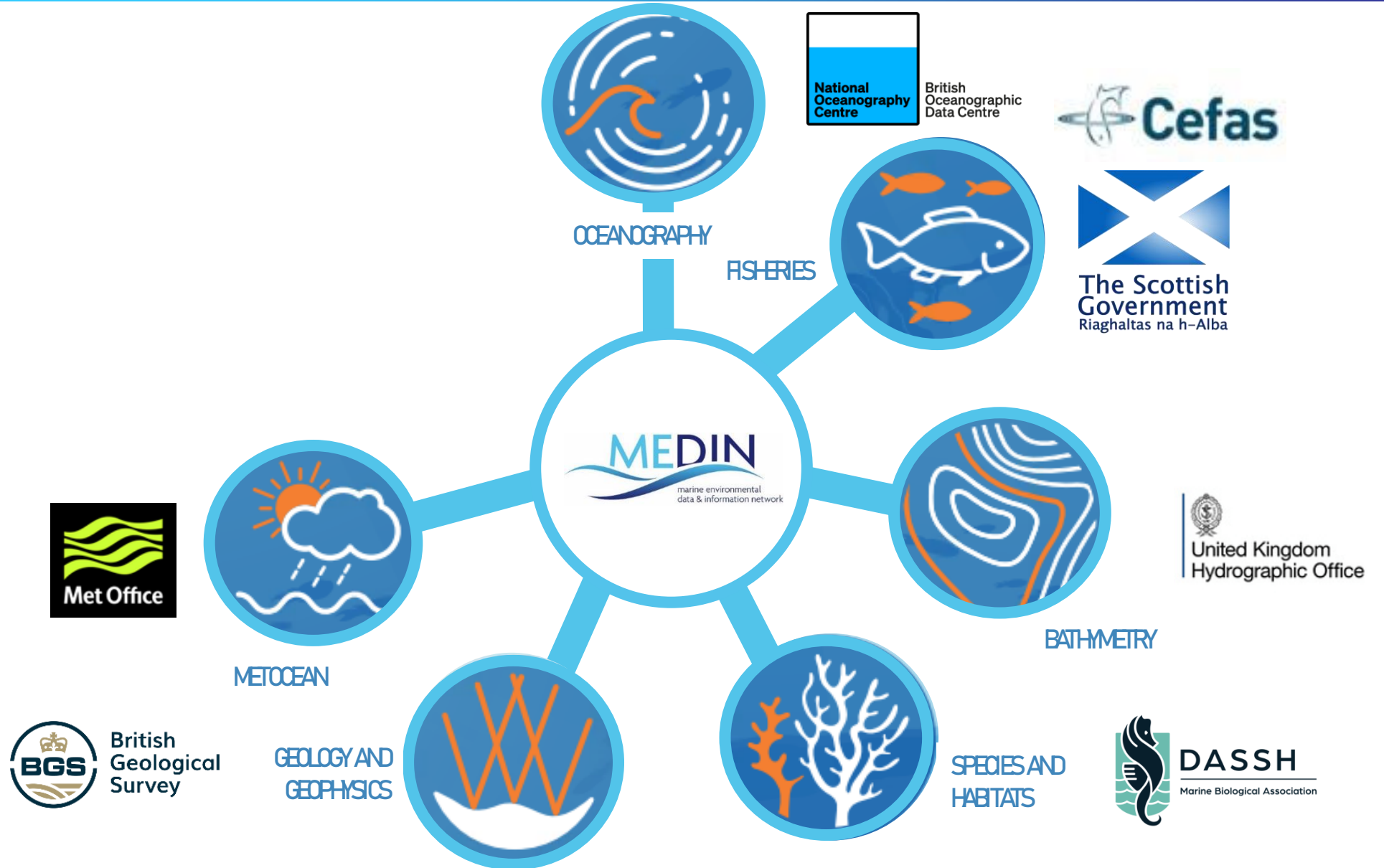
# How the DAC network evolved

2011



# How the DAC network evolved

2012



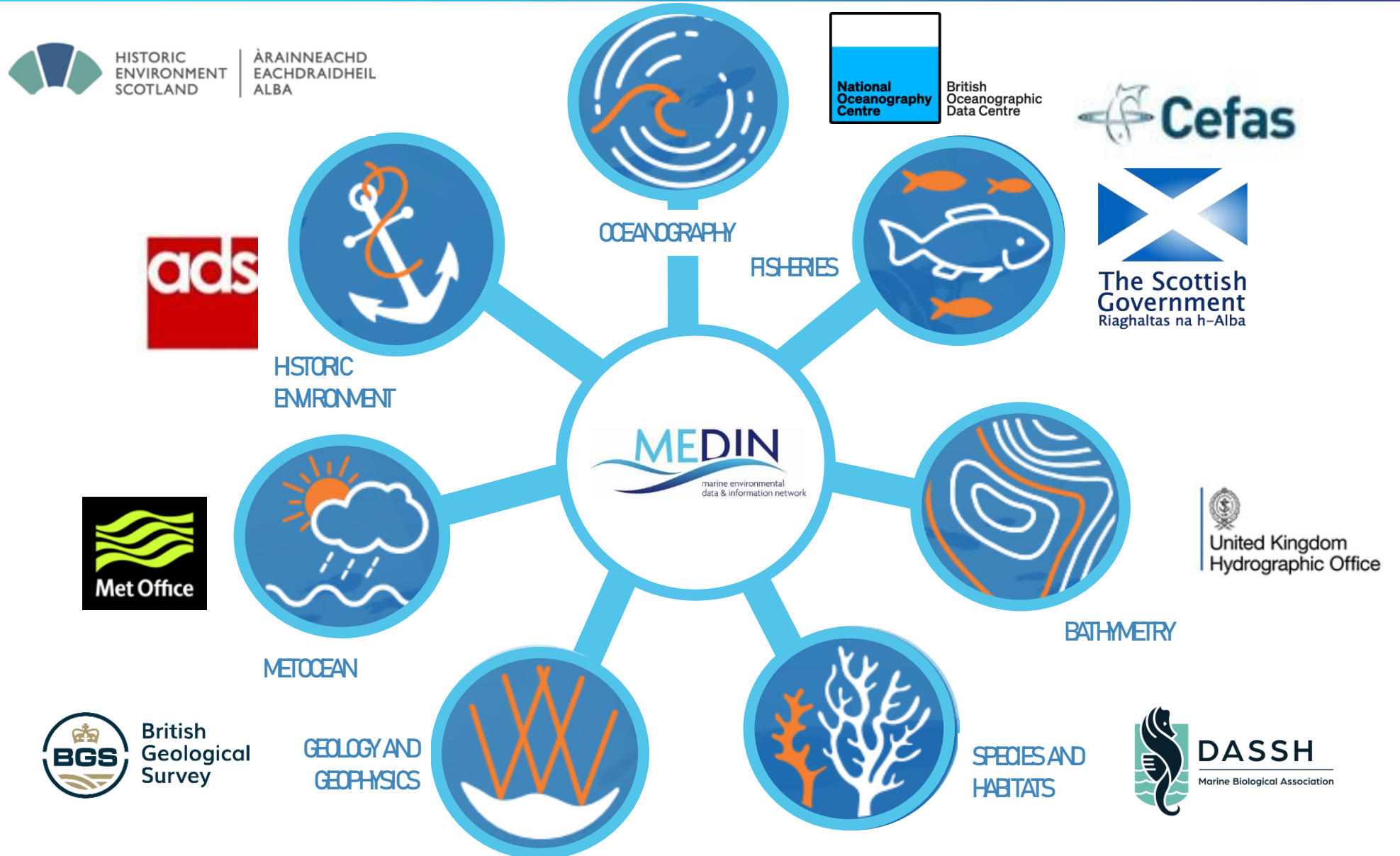
# How the DAC network evolved

2013



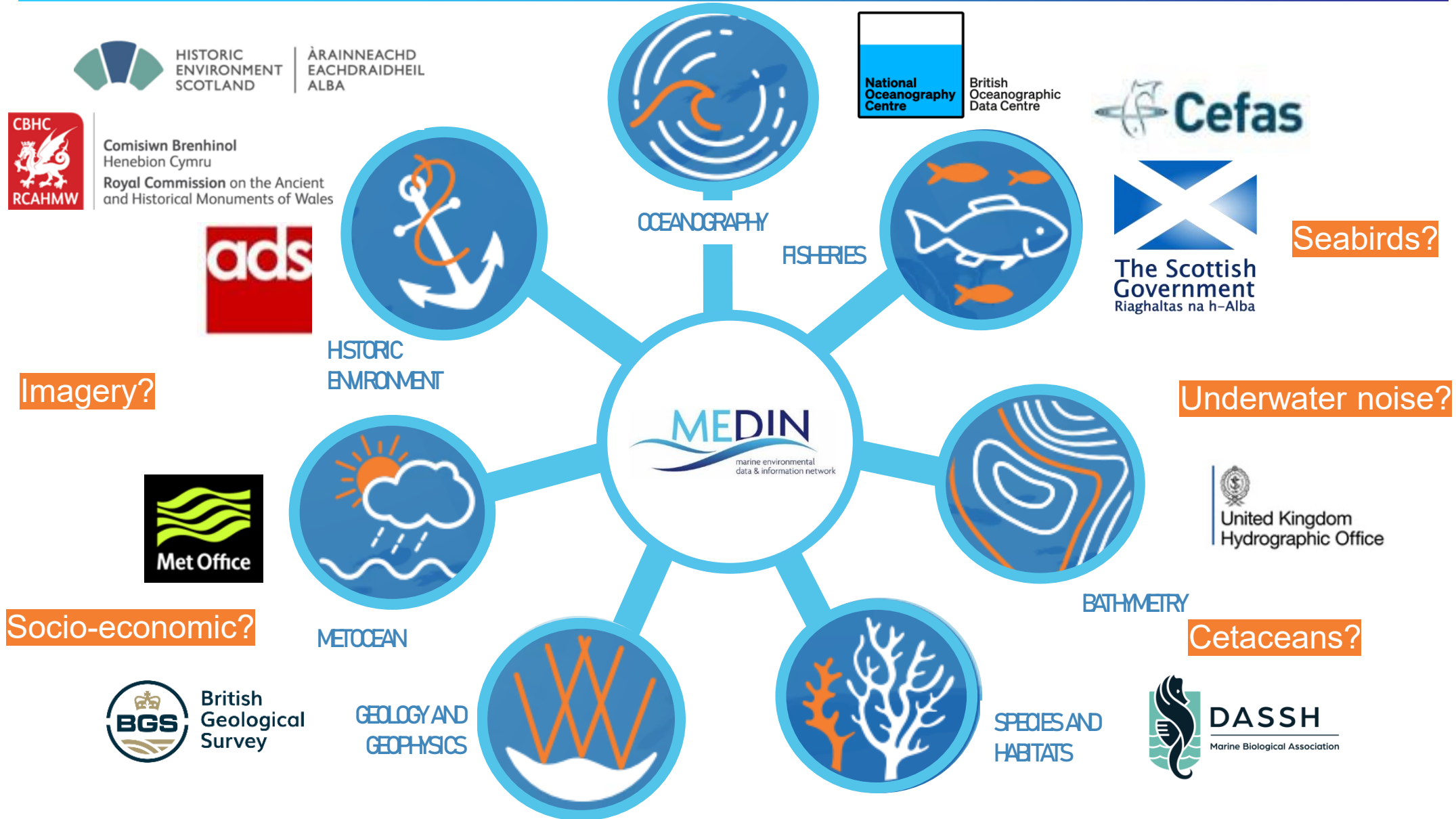
# How the DAC network evolved

2014



# How the DAC network evolved

2016



# How to become a MEDIN DAC



## Preparation

- Community identifies need
- Propose scope, remit and way of working
- Consensus between interested parties
- Business plan developed



## Accreditation

- DAC host develops responses to Core Trust Seal accreditation
- MEDIN support – shared experiences, reviewing drafts, advice.



## MEDIN Metadata

- DAC host publishes marine metadata holding on MEDIN portal
- MEDIN helpdesk can support this process
- Free workshops



## Approval

- MEDIN Executive Team considers application



# MEDIN support for marine community



Free, contextual, quality-assured data



Data and metadata standards that underpin UK marine data infrastructure



Free training to use these standards



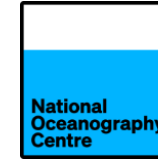
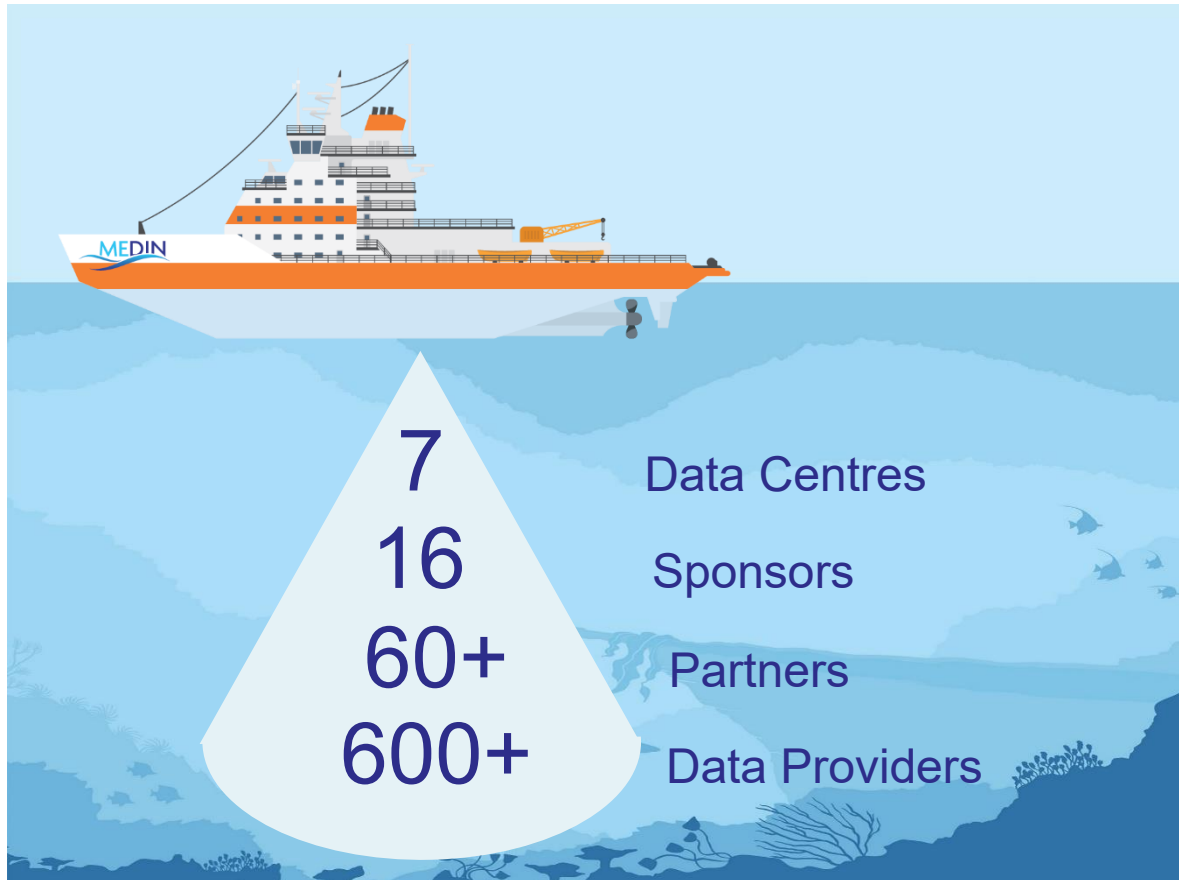
Your data made available for others to use



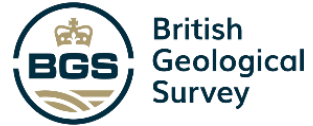
Free expert advice



# Who is involved?



British Oceanographic Data Centre



**DASSH**  
Marine Biological Association



HISTORIC ENVIRONMENT SCOTLAND

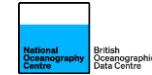
ÀRAINNEACHD EACHDRAIDHEIL ALBA



Comisiwn Brenhinol Henebion Cymru  
Royal Commission on the Ancient and Historical Monuments of Wales



# Become a MEDIN partner



# Contact points

The background of the slide is a stylized, monochromatic blue illustration of an underwater scene. It features a diver on the right side, a school of fish on the left, and various coral and rock formations throughout the scene. The overall aesthetic is clean and modern.

MEDIN portal - [portal.medin.org.uk](https://portal.medin.org.uk)  
How to find marine data [video](#)  
Enquiries - [enquiries@medin.org.uk](mailto:enquiries@medin.org.uk)

*Open invitation to join the network, follow our social media @MEDIN\_marine, subscribe to Marine Data News (<https://medin.org.uk/news>) and get in touch Dr Clare Postlethwaite [cfpo@noc.ac.uk](mailto:cfpo@noc.ac.uk)*



MEDIN Sponsors  
Board

MEDIN Executive Team

Data Archive Centre  
Working Group

Standards  
Working Group

Portal  
Working Group

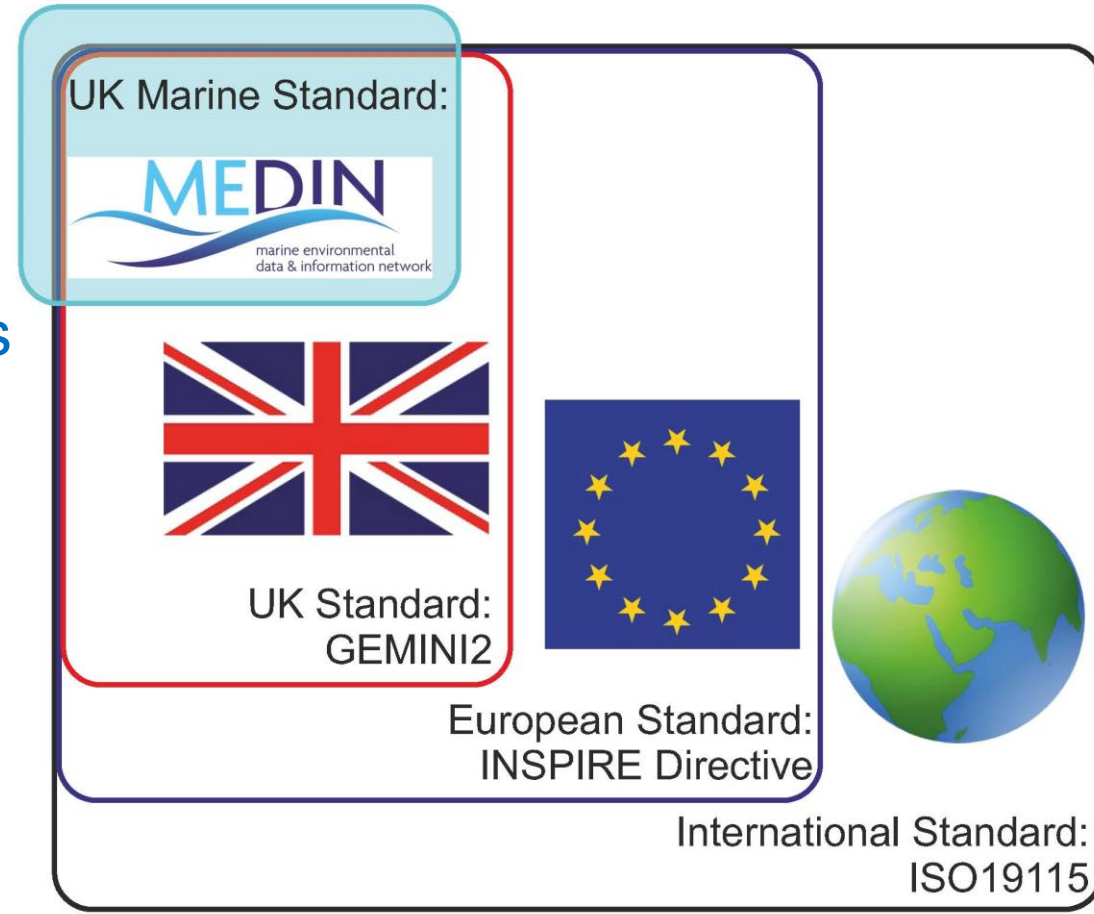
Communication  
Working Group

Open partnership of MEDIN  
(currently 60+ organisations)

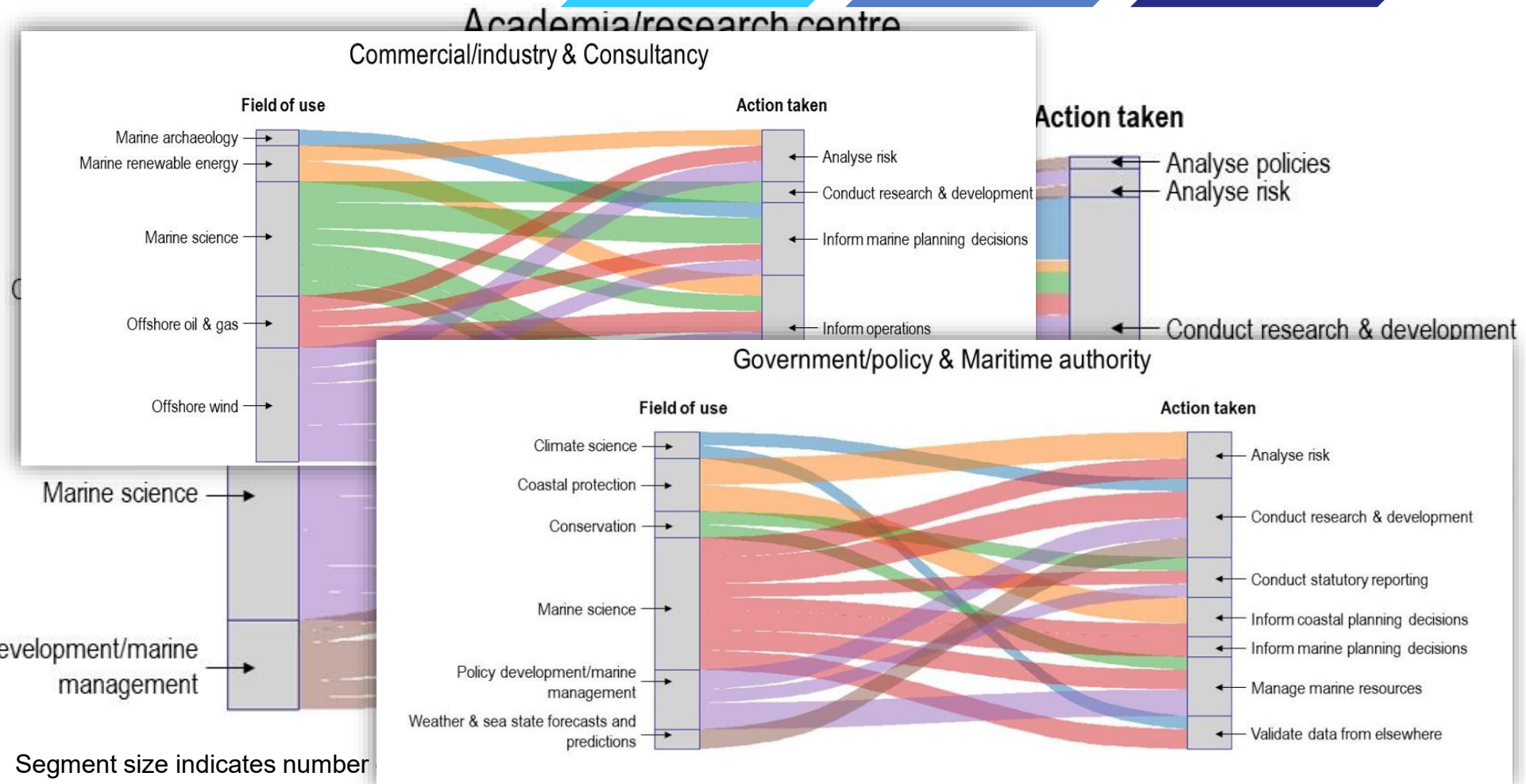
# Why make marine data openly available?

Varies by sector and organisation

- To support government policy
- As a condition of funding
- To comply with lease agreements
- To support innovation and economic growth
- As socially responsible organisations



# How are marine data used?



Policy development/marine management

Segment size indicates number